

Fertilizer Rates

Fort St. John, B.C.					Legal Description: SW19 Tp84 R18 W6								
Estimated available					Fertilizer Applied	kg/ha	Placement	Product: Recom. vs. Applied	Norwest Labs				
N	P	K	S	N					P ₂ O ₅	K ₂ O	S		
Canola													
kg/ha	101	23	230	30	27-0-0-12	200	banded	Recommended =	53	30	55	28	
lb/ac	114	26	259	34	6-26-30	150	banded	Actually applied =	57	38	55	21	
pH 6.3					12-52-0	30	in-furrow						
Flax													
kg/ha	101	23	230	30	20-0-0-24	105	banded	Recommended =	0	22	11	22	
lb/ac	114	26	259	34	6-26-30	100	banded	Actually applied =	28	38	27	22	
pH 6.3					12-52-0	30	in-furrow						
Cereals													
kg/ha	109	29	413	53	20-10-10-5	250	banded	Recommended =	14	35	0	0	
lb/ac	123	33	464	60	6-26-30	50	banded	Actually applied =	51	48	36	12	
pH 6.3					12-52-0	30	in-furrow						
Peas													
kg/ha	45	23	292	71	20-0-0-24	78	banded	Recommended =	30	30	55	8	
lb/ac	50	26	328	80	4-17-41	150	banded	Actually applied =	23	38	55	17	
pH 6.3					12-52-0	30	in-furrow						

Dawson Creek, B.C.					Legal Description: NE18 Tp78 R14 W6							
Estimated available					Fertilizer Applied	kg/ha	Placement	Product: Recom. vs. Applied	Norwest Labs			
N	P	K	S	N					P ₂ O ₅	K ₂ O	S	
Canola												
kg/ha	129	54	251	52	27-0-0-12	200	banded	Recommended =	0	17	21	21
lb/ac	145	61	282	58	6-26-30	100	banded	Actually applied =	57	38	27	21
pH 5.8					12-52-0	30	in-furrow					
Flax												
kg/ha	91	20	246	43	20-0-0-24	105	banded	Recommended =	0	22	11	22
lb/ac	102	22	276	48	6-26-30	100	banded	Actually applied =	28	38	27	22
pH 6.0					12-52-0	30	in-furrow					
Cereals												
kg/ha	151	27	280	45	20-10-10-5	218	banded	Recommended =	0	37	25	0
lb/ac	170	30	315	51	6-26-30	50	banded	Actually applied =	46	46	33	10
pH 6.0					12-52-0	30	in-furrow					
Peas												
kg/ha	132	30	232	20	20-0-0-24	64	banded	Recommended =	0	45	37	13
lb/ac	148	34	261	23	6-26-30	150	banded	Actually applied =	23	49	40	13
pH 5.8					15-52-0	30	in-furrow					

Herbicide Applications

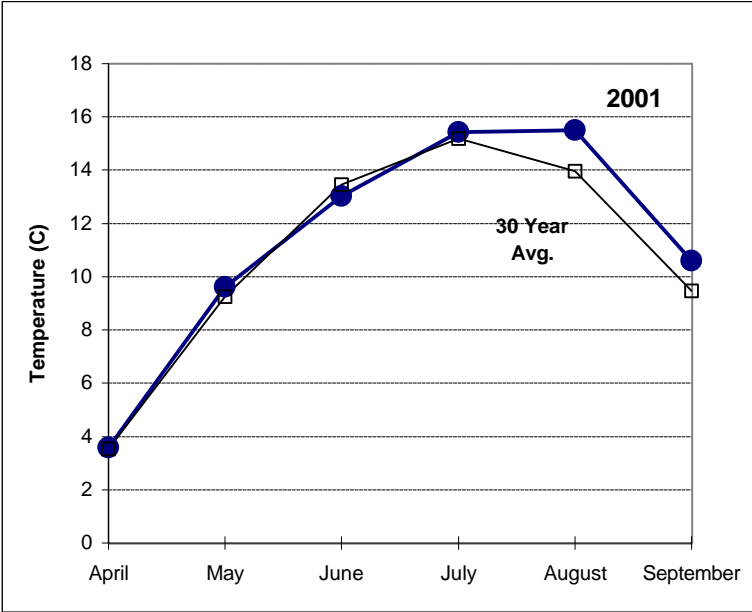
Fort St. John, B.C.		Legal Description:	SW19 Tp84 R18 W6
Crop	Date Applied	Product Used	Rate
Canola	14-Jun-01	Muster (ethametsulfuron methyl) Poast Ultra (sethoxydim) Merge	12 g/ac 450 ml/ac 600 ml/ac
	21-Jun-01	Lontrel (clopyralid)	240 ml/ac
Flax	14-Jun-01	Buctril M (bromoxynil + MCPA)	400 ml/ac
Wheat & Barley (not Oats)	5-Jun-01	Achieve 80DG Turbocharge	100 g/ac 0.5L/100L
Wheat, Barley, Oats, Triticale	8-Jun-01	Curtail M (clopyralid + MCPA ester)	800 ml/ac
Peas	5-Jun-01	Poast Ultra (sethoxydim) Merge	300 ml/ac 600 ml/ac
	8-Jun-01	Odyssey (imazamox 35% & imazethapyr 35%) Merge	17 g/ac 500 ml/100 L

Dawson Creek, B.C.		Legal Description:	NE18 Tp78 R14 W6
Crop	Date Applied	Product Used	Rate
Canola	13-Jun-01	Muster (ethametsulfuron methyl) Ag Surf	12 g/ac 200 ml/100 l
Flax	15-Jun-01	Buctril M (bromoxynil + MCPA)	400 ml/ac
Wheat, Barley, Oats, Triticale	8-Jun-01	Curtail M (clopyralid + MCPA ester)	800 ml/ac
Peas		no applications - hand picked any weeds (not severe enough to warrant spraying)	

Planting and Harvest Information

Loc.	Crop	Seeding rate		Date Planted	Air/Soil Temp (C°) @ plant	Seeding Depth	Harvest Date	Harvesting Method
		lbs/ac	kg/ha					
FSJ	Napus Canola	8	8.9	10-May-01	15 / 11	0.75 inch	15-Oct-01	pushed/direct cut
	Rapa Canola	5.8	6.5	10-May-01	15 / 11	0.75 inch	15-Oct-01	direct cut
	Flax	38	43	16-May-01		0.75 inch	15-Oct-01	direct cut
	Barley	77	86	9-May-01	15 / 10	1 inch	7-Sep-01	direct cut
	Wheat	90	101	9-May-01	15 / 10	1 inch	14-Sep-01	direct cut
	Oats	81	90	9-May-01	15 / 10	1 inch	14-Sep-01	direct cut
	Triticale	117	131	9-May-01	15 / 10	1 inch	17-Oct-01	direct cut
	Peas	149	149	9-May-01	12 / 7	1 inch	13-Sep-01	desiccate/direct
DC	Napus Canola	8	8.9	7-May-01	12 / 9	1 inch	29-Sep-01	pushed/direct cut
	Rapa Canola	5.8	6.5	7-May-01	12 / 9	1 inch	29-Sep-01	direct cut
	Flax	38	43	15-May-01		1 inch	3-Oct-01	direct cut
	Barley	77	86	3-May-01	8 / 3	1.5 inch	5-Sep-01	direct cut
	Wheat	90	101	3-May-01	8 / 3	1.5 inch	17-Sep-01	direct cut
	Oats	81	90	3-May-01	8 / 3	1.5 inch	12-Sep-01	direct cut
	Triticale	117	131	3-May-01	8 / 3	1.5 inch	5-Oct-01	direct cut
	Peas	149	149	4-May-01	13 / 5	2 inch	6-Sep-01	desiccate/direct

Dawson Creek Weather Information 2001



TEMPERATURE

Month	Monthly Avg. Temp. (C)	Temp.* 30 year Avg. (C)
April	3.6	3.5
May	9.6	9.2
June	13.0	13.5
July	15.4	15.2
August	15.5	14.0
September	10.6	9.5

Frost Events:

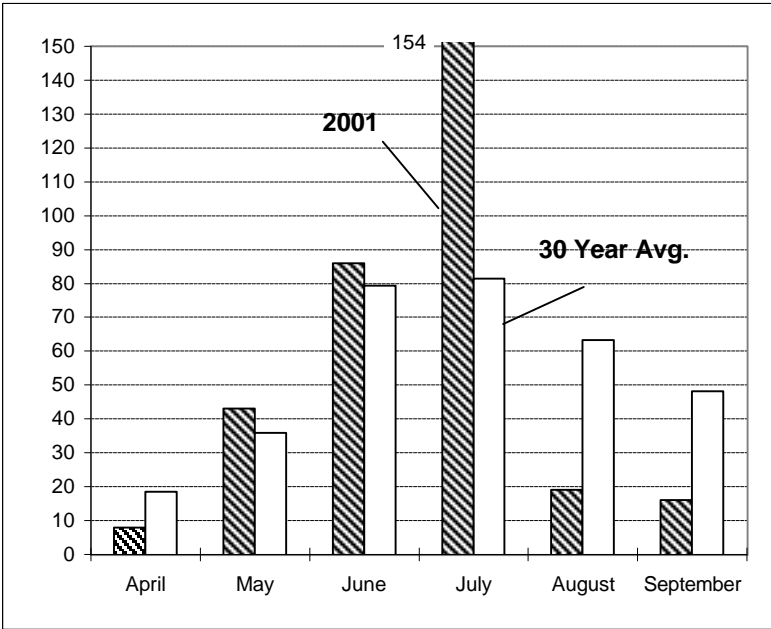
May 2	-1.1	May 18	-1.3
May 3	-3.4	May 21	-0.2
May 8	-1.0	Sept 6	-0.1
May 10	-1.6	Sept 12	-3.9
May 11	-2.8	Sept 21	-0.5
May 12	-1.0	Sept 29	-1.6
May 17	-3.3		

Killing Frost Free Period: 118 days
(May 17 - September 12)

* 30 year average DC from 1968-1997
Source: Environment CANADA

PRECIPITATION

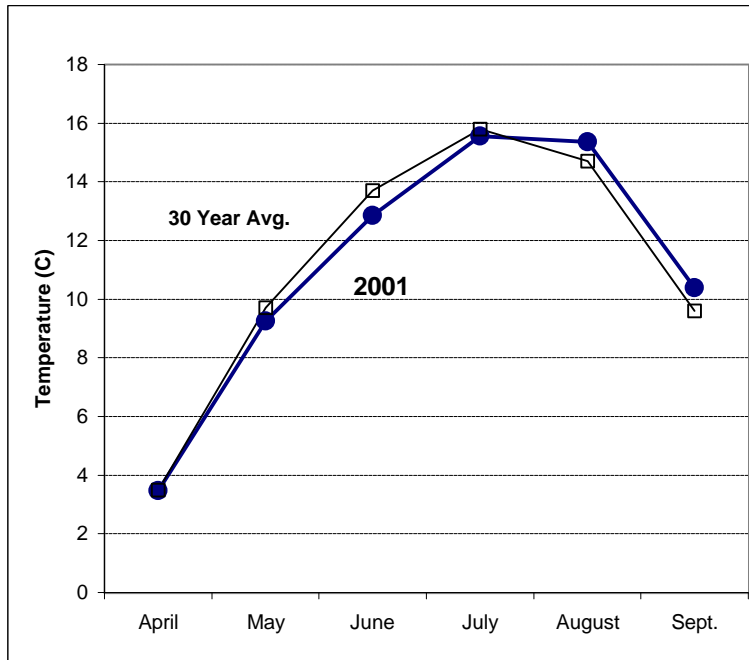
Month	Monthly Precipitation (mm)	Precipitation * 30 year Avg. (mm)
April	8	18.6
May	43	36.0
June	86	79.4
July	154	81.3
August	19	63.2
September	16	48.2



Data is provided by an on site weather station maintained by the Agriculture Risk Management Branch of the BC Ministry of Agriculture, Food and Fisheries.



Fort St. John Weather Information 2001



TEMPERATURE

Month	Monthly Avg. Temp. (C)	Temp.* 30 year Avg. (C)
April	3.5	3.5
May	9.2	9.7
June	12.9	13.7
July	15.6	15.8
August	15.4	14.7
Sept.	10.4	9.6

Frost Events:	May 3 -0.8	Sept 11 -0.5
	May 11 -1.3	Sept 12 -3.6
	May 17 -0.3	Sept 21 -0.2
	May 21 -0.1	Sept 29 -0.3

Killing Frost Free Period: 142 days
(April 23 - September 12)

* 30 year average FSJ from 1968-1997
source: Environment CANADA

PRECIPITATION

Month	Monthly Precipitation (mm)	Precipitation * 30 year Avg. (mm)
April	17	20.3
May	72	38.5
June	65	71.3
July	61	80.9
August	21	57.5
Sept.	26	48.6

Data is provided by an on site weather station maintained by the Agriculture Risk Management Branch of the BC Ministry of Agriculture, Food and Fisheries.

